



CHURCHILL



**HOTELS**

Portfolio



CHURCHILL

Over 225 years  
of innovation,  
passion and  
expertise



**Made in England**  
since 1795

Since 1795 Churchill has built a reputation for manufacturing and supplying the highest quality tabletop solutions.

Offering an extensive and innovative portfolio of ceramics, wood, melamine, glassware and cutlery with Churchill's service and quality guarantee.






# CHURCHILL®

## Contents

CHURCHILL TIMELINE	4
WHY CHURCHILL	5
TECHNICAL STORY	6
HYGIENE	7
LOBBY CAFÉ	8 - 10
BAR	11 - 13
ALL DAY DINING	14 - 16
EXECUTIVE LOUNGE	17 - 19
BANQUETING	20 - 22
BUFFET	23 - 24
MEETING ROOMS	25 - 27
ROOM SERVICE	28 - 30
POOLSIDE	31 - 33
COLOUR GUIDE	34 - 36

1795



FIRST ESTABLISHED AS  
**SAMPSON BRIDGWOOD**

Sampson Bridgwood first manufactures earthenware in Stoke-on-Trent, England

1980

**FIRST MANUFACTURED VITRIFIED HOTELWARE**  
The Churchill Super Vitrified body is one of the strongest in the world delivering presentation that lasts



— RE-BRANDED —  
**CHURCHILL**

Name symbolises strength and leadership

1984

1993

**CHURCHILL WINS ITS SECOND QUEENS EXPORT AWARD**  
First won in 1988 then again in 1993



THE QUEEN'S AWARD FOR EXPORT ACHIEVEMENT

1994



— LISTED ON —  
**THE LONDON STOCK EXCHANGE**

2001



**NO. 1**

Recognised as No.1 in the UK Hospitality Market

2002



ALCHEMY®  
fine china

**ALCHEMY BRAND LAUNCHED**  
Premium collections designed to create the ultimate fine dining experience



2008



**ART de CUISINE®**  
By CHURCHILL

**ART DE CUISINE BRAND LAUNCHED**  
Range for professional caterers that delivers, style, individuality and value

2009



**LOGISTICS**  
x4m investment

— LAUNCH OF —  
**PROFILE**

A lightweight solution with no compromise on performance

2011

**LONDON SHOWROOM OPENED**  
Business Design Centre, Islington



2013



— LAUNCH OF —  
**BAMBOO**  
An embossed collection Inspired by nature

2014

— LAUNCH OF —  
**Stonecast®**  
A hand decorated range inspired by the changing seasons and fresh ingredients.



2015

**MADRID SHOWROOM OPENED**  
Princesa Street, Madrid, Spain



2016



— LAUNCH OF —  
**STUDIO PRINTS Raku**

An innovative range that showcases reactive texture through print, inspired by traditional glazing techniques

2017

**NEW SHOWROOM UK HEAD OFFICE**



THE CERAMIC PRODUCT EXCELLENCE AWARDS WINNER 2016  
**Stonecast® AWARD WINNER**

2018

— LAUNCH OF —  
**NEW WEBSITE**

VISIT OUR WEBSITE...  
Build a brochure, search for products & view the latest news stories



[www.churchill1795.com](http://www.churchill1795.com)

### Global Network

We offer a first class service through a substantial global network of distributors with recent investment in warehousing, customer service and delivery.

### Stock Availability

We currently hold over 7 million pieces of packed stock in our global warehouses (UK, Rotterdam & Chicago) to ensure product availability worldwide.

### Design Innovation

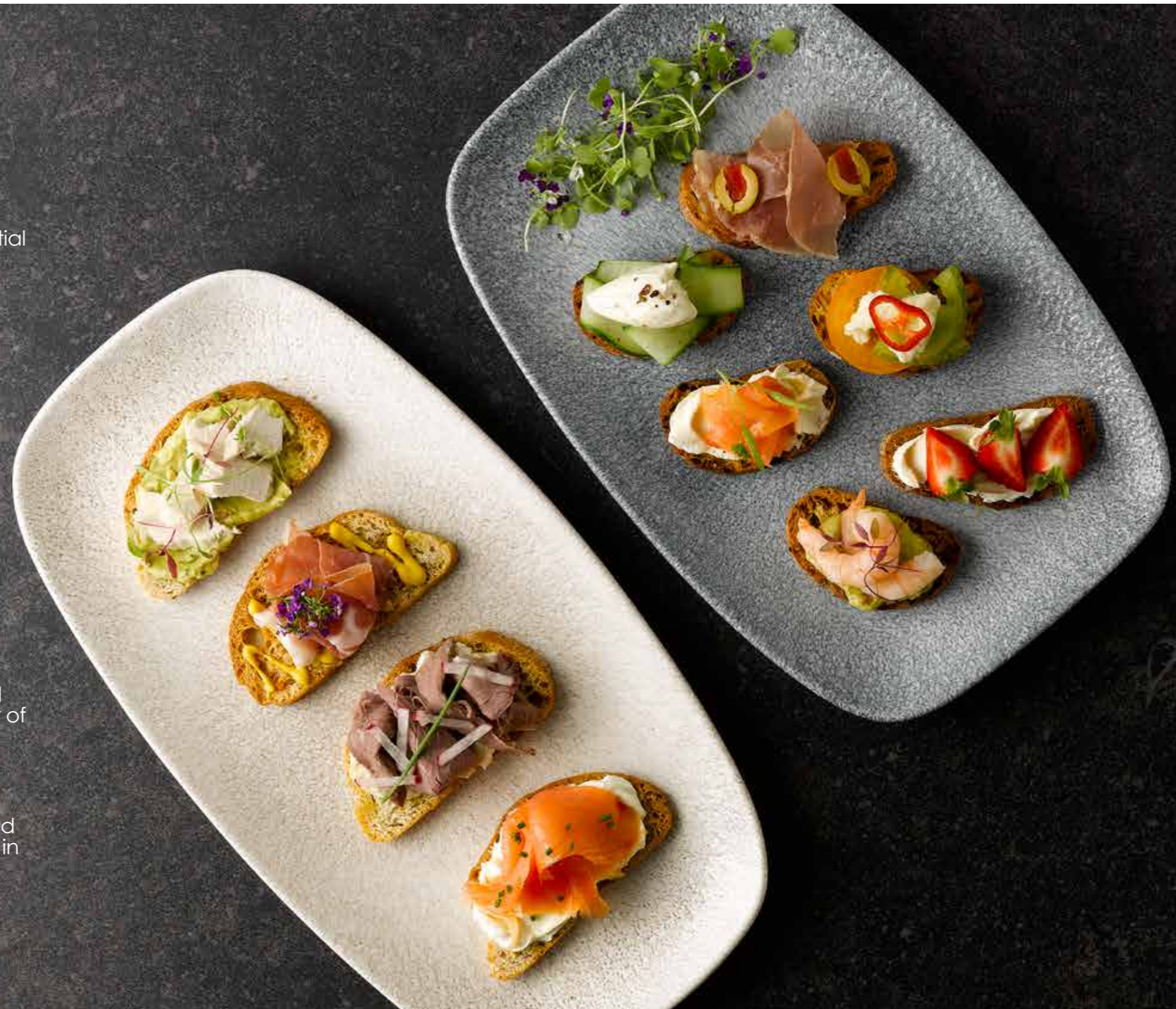
The importance of providing a wide range of innovative choices to our customers is evident through our product launches and a product portfolio of over 3,000 products.

### Manufacturing Technology

The Churchill brand is globally recognised and we have a solid reputation as a manufacturer of the highest quality ceramic products.

### Quality Products

Rigorous and stringent product testing is carried out on our products, both independently and in our own UKAS accredited laboratories.



# PERFORMANCE DELIVERED

8 REASONS WHY A CHURCHILL  
PLATE IS MORE THAN JUST A PLATE



WE BLEND CENTURIES OF EXPERIENCE WITH CUTTING EDGE TECHNOLOGY AND DESIGN INNOVATION TO PRODUCE ONE OF THE STRONGEST CERAMIC BODIES IN THE WORLD.

Manufactured in the UK, Churchill's tableware is precisely engineered to perform to the demands of the hospitality environment. Every step in the process is practised and refined. From the sourcing of raw materials and unique formulation of the clay body, to shape engineering and numerous

quality checks ensuring that Churchill products work as hard as you do. Top industry chefs choose Churchill over other brands due to the performance, expertise and design of our ceramics adding value to their hospitality operations.



01 PERFORMANCE MATERIALS

02 ENGINEERED SHAPE & FORM

03 VITRIFICATION & FIRING

04 GLAZING

05 QUALITY & CONFORMANCE

06 DESIGN INNOVATION

07 SERVICE & STOCK

08 HISTORY & HERITAGE



## PERFORMANCE MATERIALS

Our unique clay recipe is essential in creating a strong and durable product for the hospitality industry. Our raw materials are selected to deliver the optimum balance of strength and whiteness.



## ENGINEERED SHAPE & FORM

Every piece of Churchill's ceramic is designed with performance in mind. Through expert shape engineering, we reinforce strength and durability while continual investment in technology guarantees functionality and consistent quality.



## VITRIFICATION & FIRING

100% of Churchill's ceramics are vitrified which is essential to the hospitality industry. Through the process of vitrification, the particle structure of our ceramic body becomes strong, dense and watertight



## GLAZING

Our glaze is hard wearing and designed specifically for the hospitality environment. The durability is a combination of the glaze recipe, the firing temperature and substrate. Our Eco Glaze is specially formulated to be re-usable, minimising our impact on the environment.



## QUALITY & CONFORMANCE

Churchill ceramics are continuously tested and quality checked, from the stage of raw materials, throughout the manufacturing process to the final fired piece.



## DESIGN INNOVATION

Churchill are experts in ceramic design and at the forefront of innovation. Our entire product portfolio is designed in the UK by our experienced and talented design team. We work with chefs from around the world ensuring we understand the needs of our customers.



## SERVICE & STOCK

At Churchill we are dedicated to reliability, ensuring our product is in stock and delivered on time. We pride ourselves on our stock levels and ability to deliver on time, all around the world.



## HISTORY & HERITAGE

Established in 1795, Churchill have been manufacturing ceramics in Stoke on Trent, England for 225 years.

# FOOD SAFETY



**AT CHURCHILL, WE KNOW THAT FOOD SAFETY HAS ALWAYS BEEN A TOP PRIORITY FOR THE HOSPITALITY INDUSTRY. OUR COMMITMENT TO SUPPORTING FOOD SAFETY REMAINS OF HIGH IMPORTANCE TO US.**

We blend centuries of experience with cutting edge technology and design innovation to produce one of the strongest ceramic bodies in the world.

Choosing our vitrified ceramic products, each with a hard-wearing superior glaze and edge chip resistance, helps to support food safety.

**The perfect blend of science, expertise and engineering. Churchill products are engineered to perform, to protect and to last.**



SUPPORTING  
FOOD SAFETY



# LOBBY CAFE





**BEST OPTION**



**BETTER OPTION**



**GOOD OPTION**



BEST OPTION



BETTER OPTION



GOOD OPTION



# BAR



BEST OPTION



BETTER OPTION



GOOD OPTION



**BEST OPTION**



**BETTER OPTION**



**GOOD OPTION**



# ALL DAY DINING



**BEST OPTION**



Ambience

**BETTER OPTION**



Alchemy White

**GOOD OPTION**



Profile



Ambience



Alchemy White



Profile

# ALL DAY DINING - COLOUR OPTIONS

## BEST OPTION



## BETTER OPTION



## GOOD OPTION





# EXECUTIVE LOUNGE



BEST OPTION



BETTER OPTION



GOOD OPTION



# EXECUTIVE LOUNGE - COLOUR OPTIONS

## BEST OPTION



## BETTER OPTION



## GOOD OPTION





**BEST OPTION**



Ambience

**BETTER OPTION**



Isla

**GOOD OPTION**



Profile



Ambience



Bamboo



Profile

**BEST OPTION**



Platinum Bands

**BETTER OPTION**



Bamboo

**GOOD OPTION**



Igneous



Gold Bands



Isla



Caldera

# BUFFET



# BUFFET



Buffet and Stonecast



Stonecast & Buffet



Stonecast Hints & Buffet



Stonecast Melamine



Buffet



Buffet



# MEETING ROOMS



BEST OPTION



Rush

BETTER OPTION



Vellum

GOOD OPTION



Evolve



Signature Tiles



Orbit



Café

# MEETING ROOMS - COLOUR OPTIONS

## BEST OPTION



## BETTER OPTION



## GOOD OPTION



# ROOM SERVICE



**BEST OPTION**



**BETTER OPTION**



**GOOD OPTION**



# ROOM SERVICE - COLOUR OPTIONS

## BEST OPTION



## BETTER OPTION



## GOOD OPTION



# PROSIDESTONE



# POOLSIDE - WHITE & COLOUR OPTION

**BEST OPTION**



Handled Paddle Boards



Buffet Trays



Handled Paddle Board



Handled Paddle Boards



Stonecast Melamine



Moonstone Bowls



# POOLSIDE - WHITE & COLOUR OPTION

BETTER OPTION



## Stonecast®

Stonecast items are available in the colours below.

<b>BARLEY WHITE SWHS</b>	<b>DUCK EGG SDES</b>	<b>NUTMEG CREAM SNMS</b>	<b>PEPPER- CORN GREY SPGS</b>	<b>SPICED ORANGE SSOS</b>	<b>CORN- FLOWER BLUE SCFS</b>	<b>BERRY RED SBRS</b>	<b>MUSTARD SEED YELLOW SMSS</b>	<b>BLUE- BERRY SBBS</b>	<b>SAMPHIRE GREEN SSGS</b>	<b>PETAL PINK SPPS</b>	<b>LAVENDER SLAS</b>
											

## Stonecast®

### Patina

Stonecast Patina items are available in the colours below.

<b>ANTIQUÉ TAUPE PAAT</b>	<b>BURNISHED GREEN PABG</b>	<b>IRON BLACK PAIB</b>	<b>VINTAGE COPPER PAVC</b>	<b>RUSTIC TEAL PATR</b>	<b>COBALT BLUE PABL</b>	<b>RUST RED PARE</b>
						

## Stonecast®

### Aqueous

Stonecast Aqueous items are available in the colours below.

<b>BAYOU</b> SABT	<b>FJORD</b> SAGR	<b>LAGOON</b> SALG
----------------------	----------------------	-----------------------



## Stonecast®

### Accents

Stonecast Accents items are available in the colours below.

<b>BLUEBERRY</b> ASBL	<b>DUCK EGG</b> BLUE ASDE
--------------------------	---------------------------------



## STUDIO® PRINTS

### Raku

Studio Prints Raku items are available in the colours below.

<b>TOPAZ</b> BLUE RKTB	<b>QUARTZ</b> BLACK RKBQ	<b>AGATE</b> GREY RKAG	<b>JADE</b> GREEN RKJG	<b>GARNET</b> ORANGE RKGO	<b>JASPER</b> GREY RKGO
------------------------------	--------------------------------	------------------------------	------------------------------	---------------------------------	-------------------------------



## STUDIO® PRINTS

### Agano

Studio Prints Agano items are available in the colours below.

<b>BLACK</b> AGBL	<b>BLUE</b> AGBU
----------------------	---------------------



**STUDIO®  
PRINTS**

Stone

Studio Prints Stone items are available in the colours below.

<b>AGATE GREY STAG</b>	<b>ZIRCON BROWN STZB</b>	<b>QUARTZ BLACK STQB</b>	<b>AQUA- MARINE STAM</b>	<b>PEARL GREY STGP</b>
				

**STUDIO®  
PRINTS**

Homespun

Studio Prints Homespun items are available in the colours below.

<b>SLATE BLUE SPSB</b>	<b>STONE GREY SPSG</b>	<b>CHARCOAL BLACK SPCB</b>
		

**STUDIO®  
PRINTS**

Homespun Accents

Studio Prints Homespun Accents items are available in the colours below.

<b>JASPER GREY HAJG</b>




# CHURCHiLL

[churchill1795.com](http://churchill1795.com)

f Churchill1795

@churchill1795

@Churchill\_1795

Tel: +44 (0) 1782 577 566

Fax: +44 (0) 1782 524 355

email: [info@churchill1795.com](mailto:info@churchill1795.com)

---

## HEAD OFFICE & STOKE SHOWROOM

No. 1 Marlborough Way  
Tunstall  
Stoke-on-Trent  
ST6 5NZ

## LONDON SHOWROOM

Business Design Centre  
Suite 102  
52 Upper Street  
Islington  
London  
N1 0QH

## MADRID SHOWROOM

Calle Princesa No 2  
7ta Planta  
Puertas 4 y 5  
Madrid 28008  
España  
Tel: 910 004 929